







**\*\* NEW BUILD \*\* AND READY TO RESERVE\*\***

The Seaton offers an open plan kitchen and dining room which provides direct access to the garden – and consequently views and natural light. Another is the generous bedroom one, which benefits from an en suite and built-in wardrobe. Each of the three double bedrooms are generously proportioned and the house also includes convenient storage space.

#### KEY FEATURES

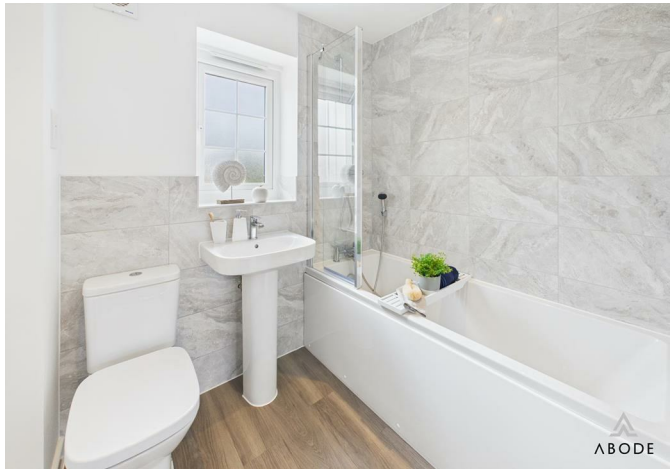
- 10 year NHBC warranty
- 2 year Crest Nicholson warranty
- Built-in wardrobe to bedroom 1
- En suite to bedroom 1
- French doors open out into the garden
- Garage and parking
- L-shaped kitchen
- Open plan kitchen/dining area
- Separate living room
- Three double bedrooms











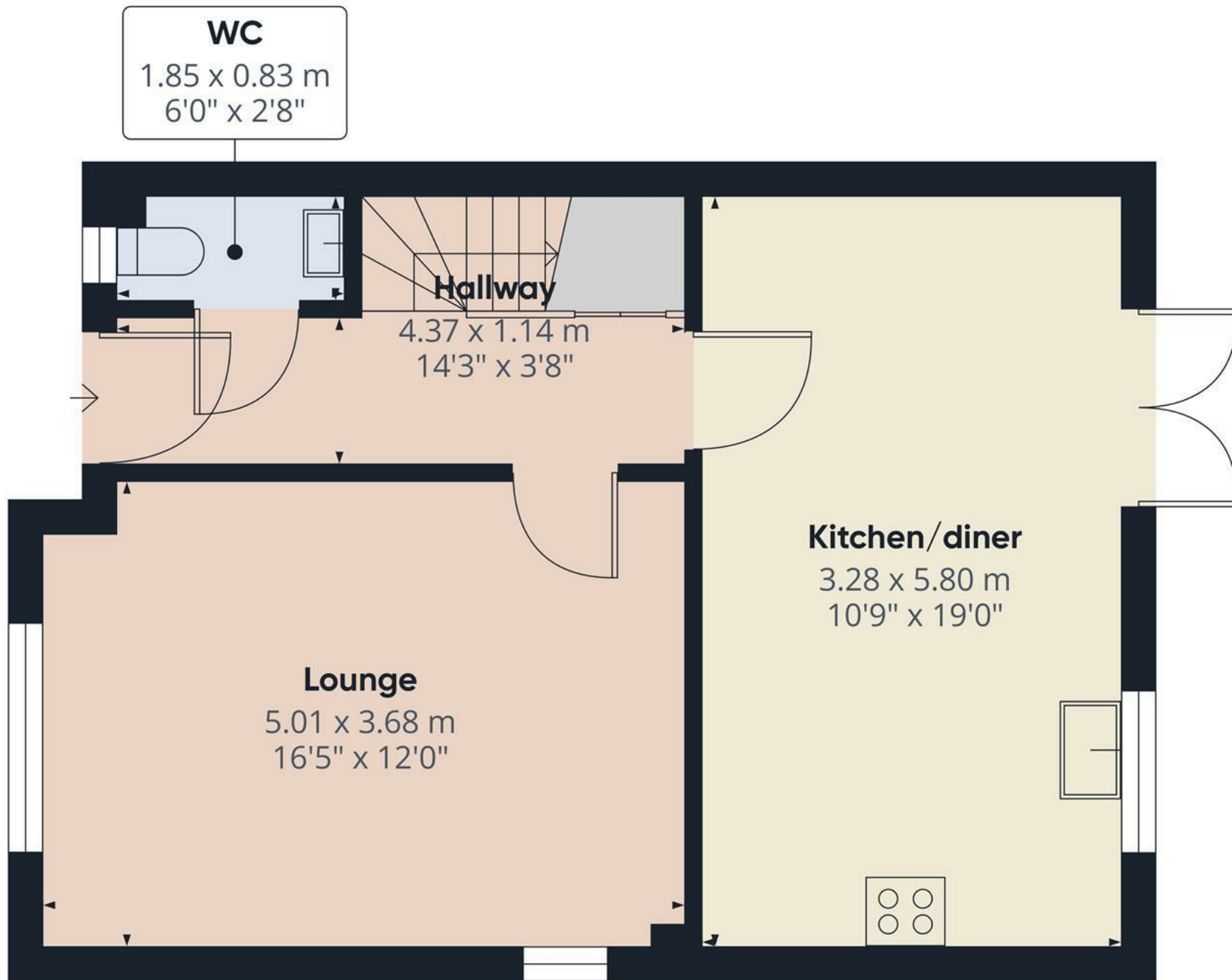












Floor 0

Approximate total area<sup>(1)</sup>

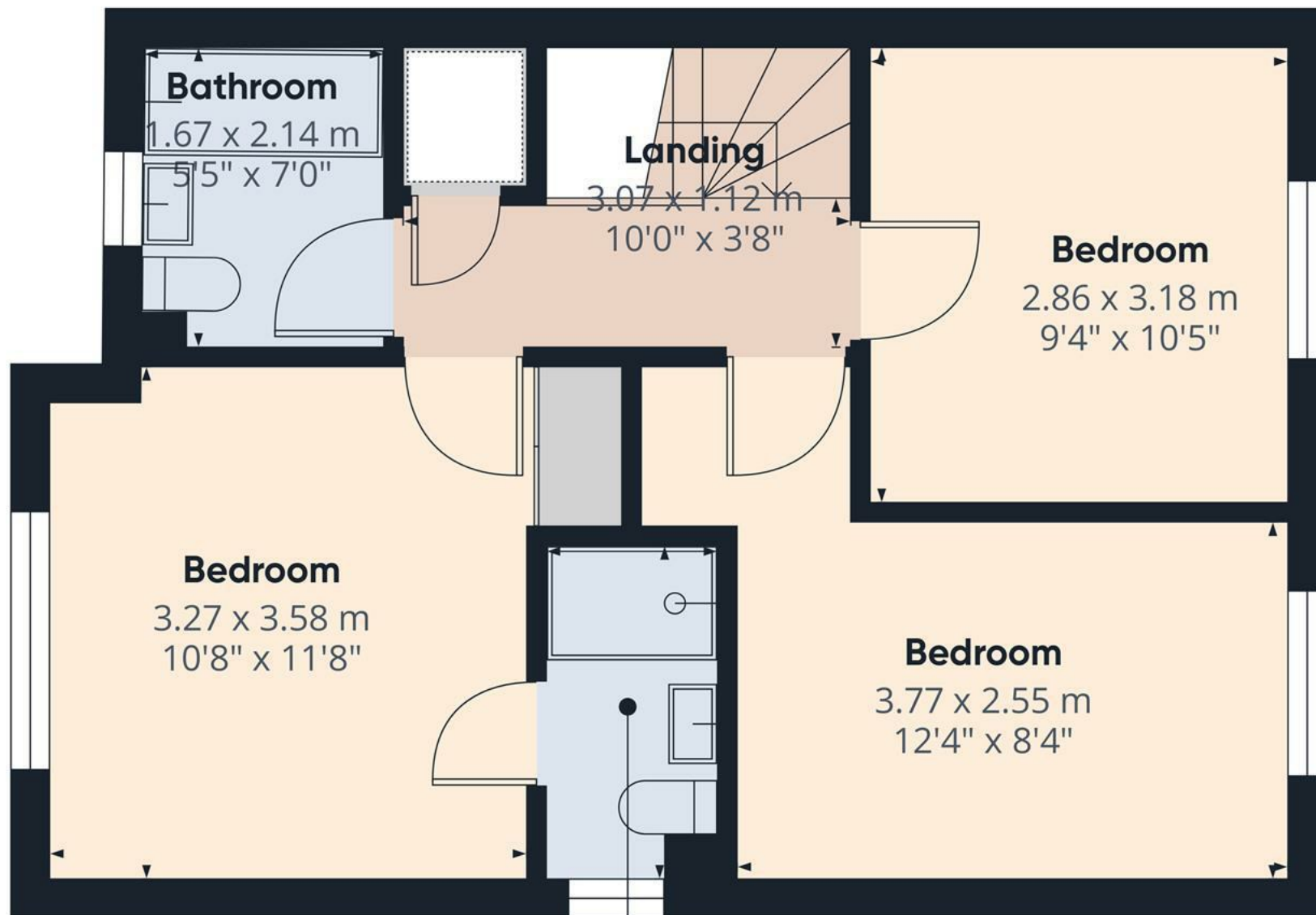
46.3 m<sup>2</sup>

499 ft<sup>2</sup>

(1) Excluding balconies and terraces

Calculations reference the RICS IPMS 3C standard. Measurements are approximate and not to scale. This floor plan is intended for illustration only.

GIRAFFE360



Approximate total area<sup>(1)</sup>

42 m<sup>2</sup>

454 ft<sup>2</sup>

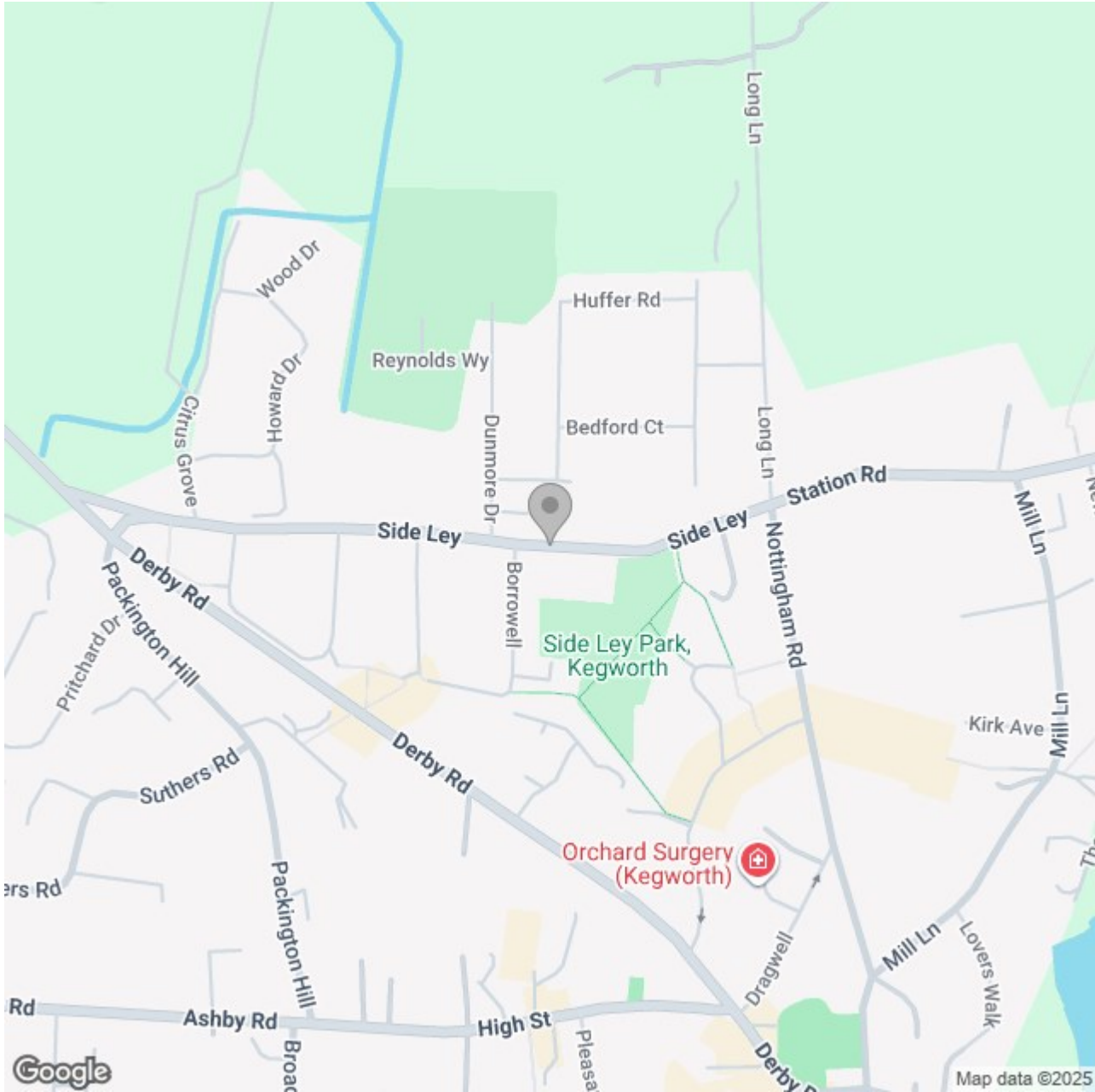
(1) Excluding balconies and terraces

Calculations reference the RICS IPMS 3C standard. Measurements are approximate and not to scale. This floor plan is intended for illustration only.

GIRAFFE360

Floor 1





Energy Efficiency Rating		
	Current	Potential
Very energy efficient - lower running costs		
(92 plus) A		
(81-91) B		
(69-80) C		
(55-68) D		
(39-54) E		
(21-38) F		
(1-20) G		
Not energy efficient - higher running costs		
England & Wales	EU Directive 2002/91/EC 	